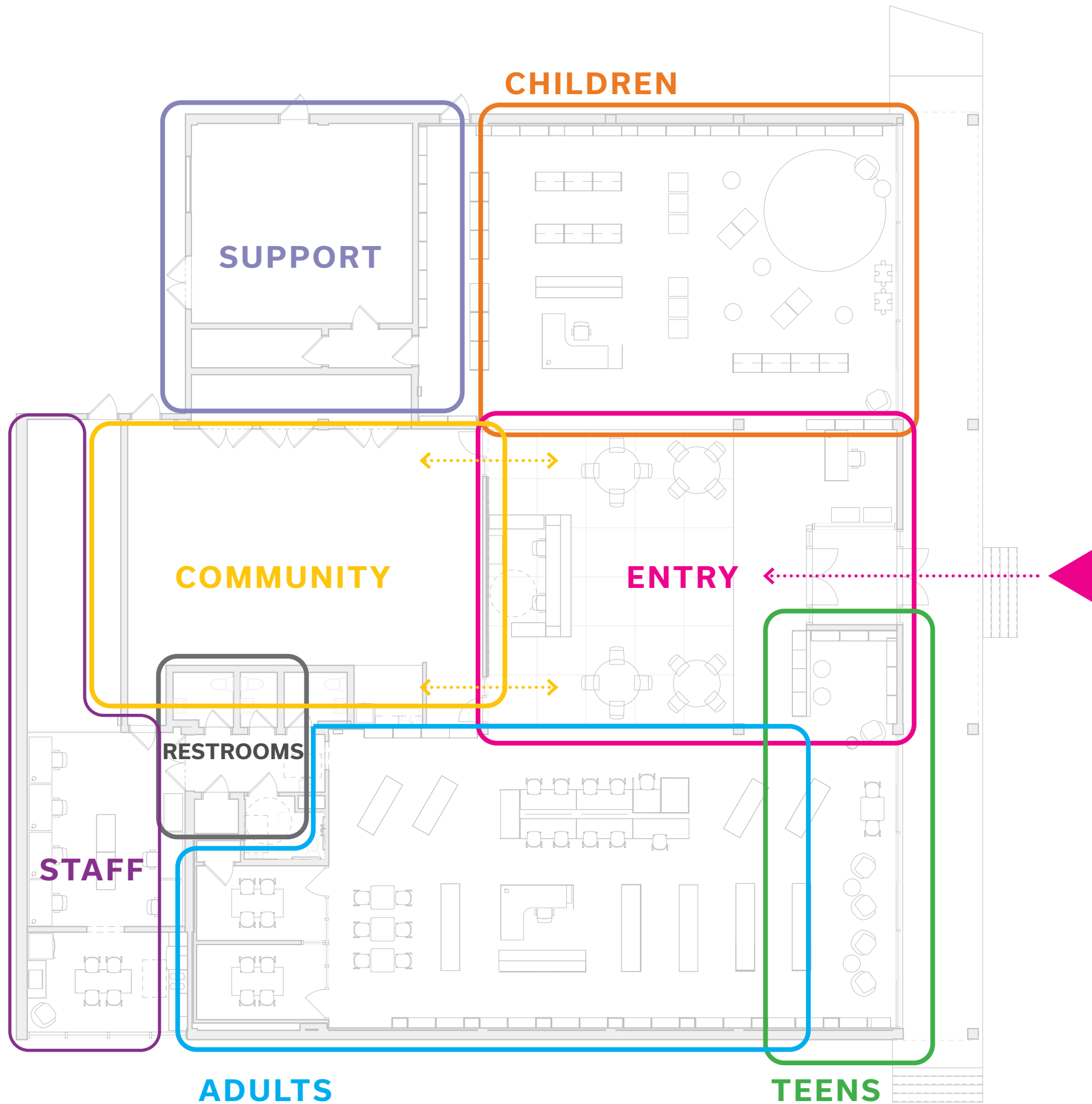


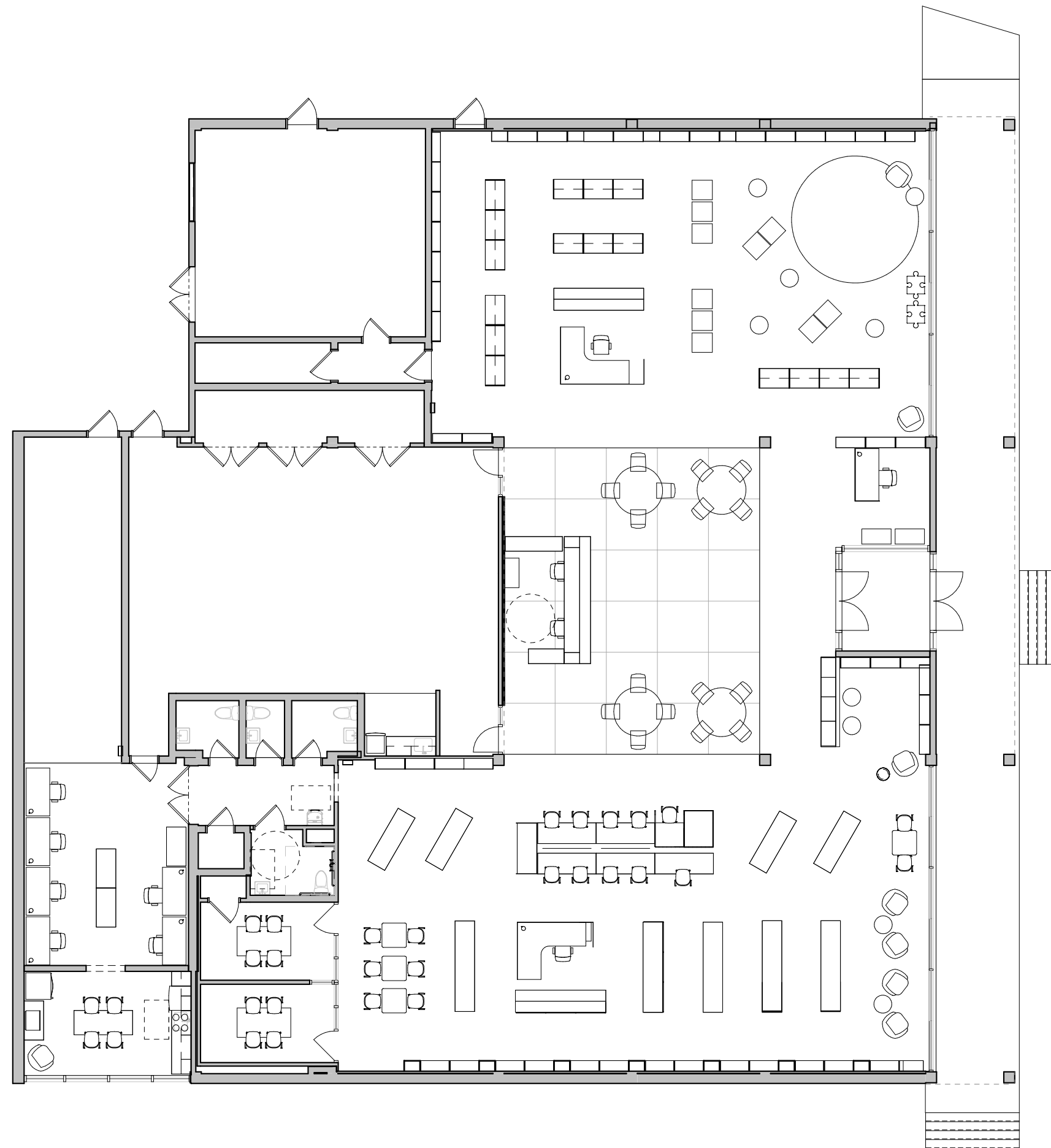
# LAWNCREST LIBRARY

REBUILD | 2023.03.31

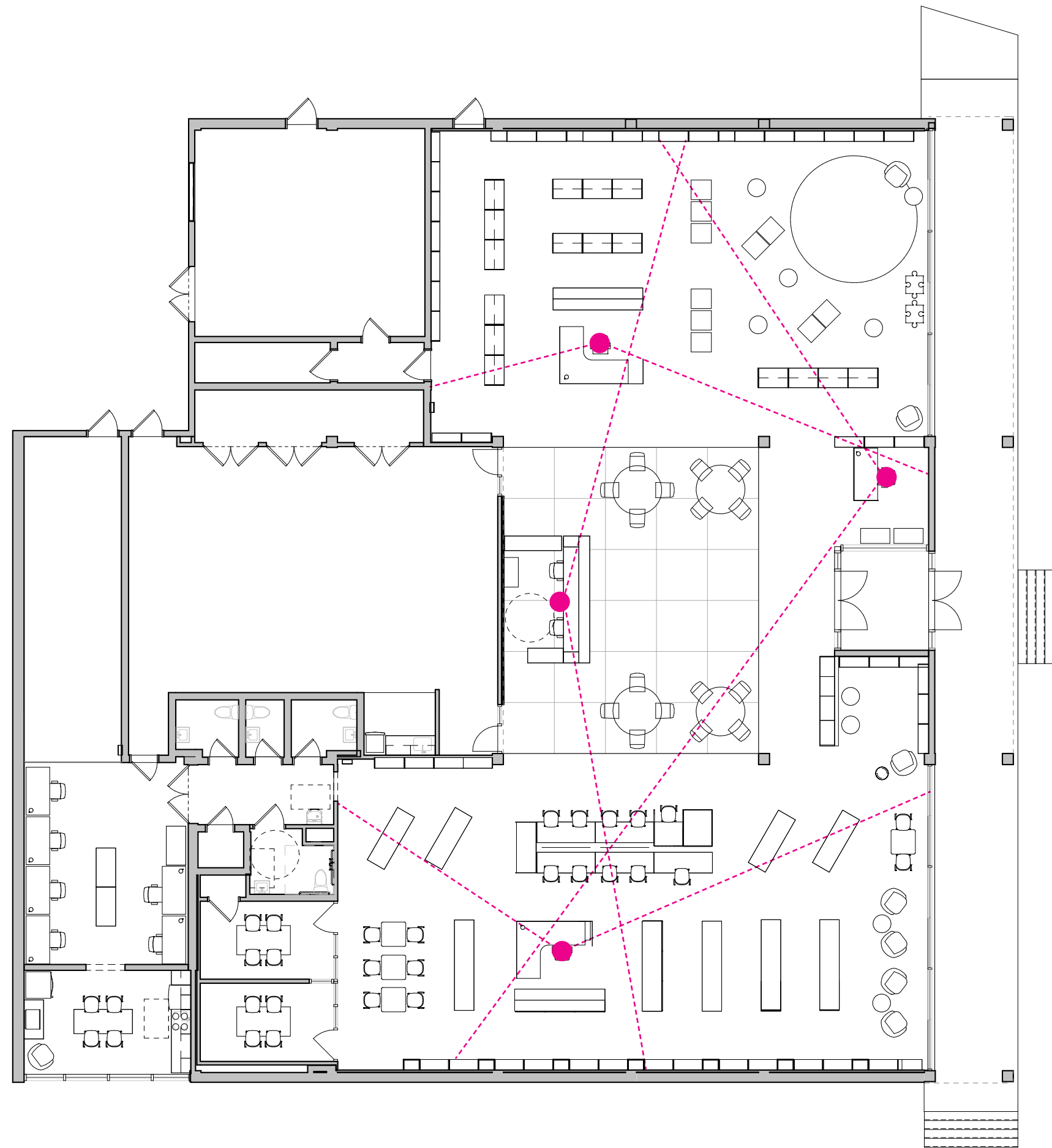
FLOOR PLAN



FLOOR PLAN



SIGHTLINES





INSPIRATION





ENTRY





ADULT AREA



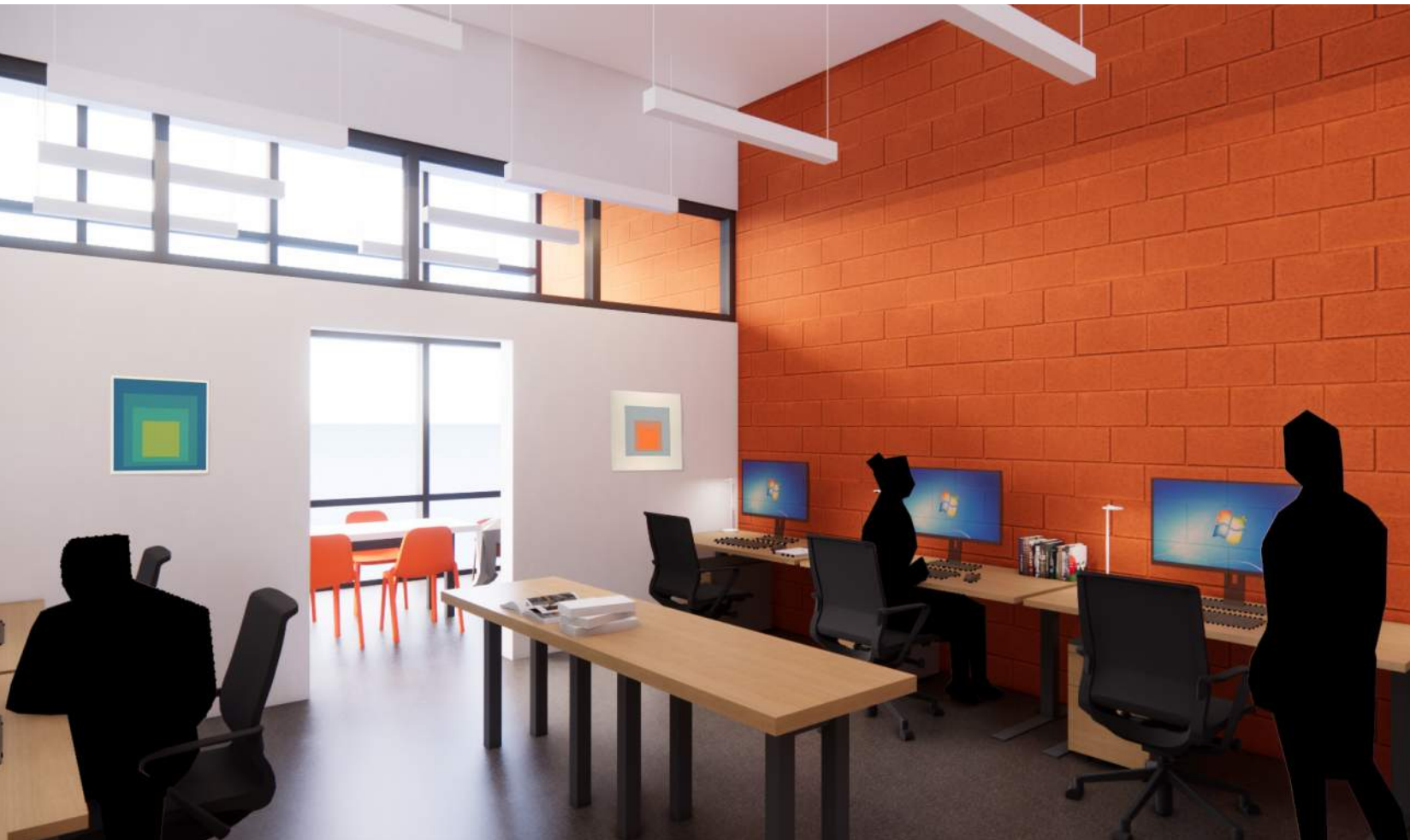


COMMUNITY ROOM





STAFF WORKROOM





CHILDREN'S AREA



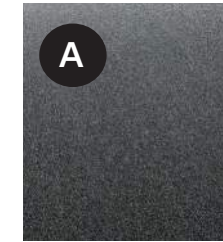






# FINISHES - FLOORS

## ENTRY MAT

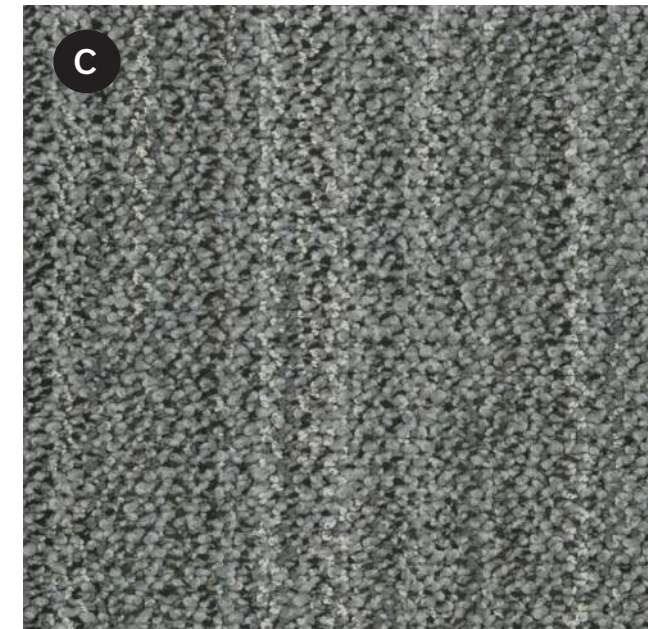


SHAW CONTRACT  
BON JOUR II  
60746

## EXISTING FLOOR



## CARPET



SHAW CONTRACT  
5T3321 01535 SILVER

## VCT-1



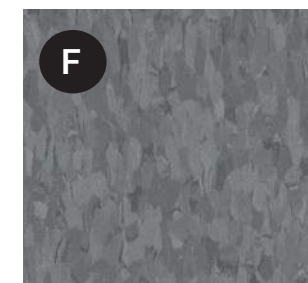
ARMSTRONG VCT  
59240 PEAT

## VCT-2



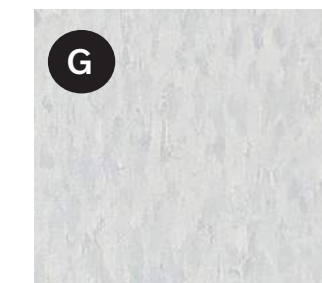
ARMSTRONG VCT  
51821 CARIBBEAN BLUE

## VCT-3



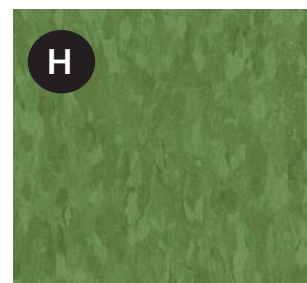
ARMSTRONG VCT  
51915 CHARCOAL

## VCT-4



ARMSTRONG VCT  
51860 SOFT COOL GREY

## VCT-5



ARMSTRONG VCT  
57546 LIME ZEST



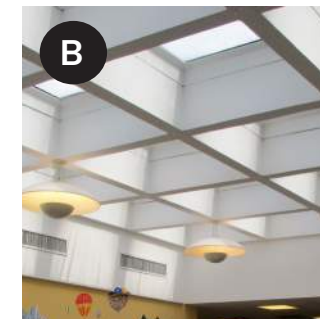


FINISHES - CEILING

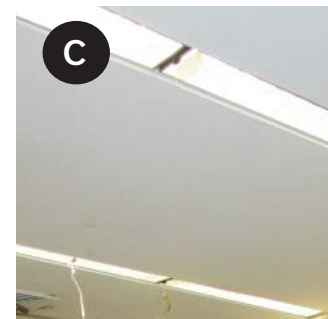
DECORATIVE CEILING TILE



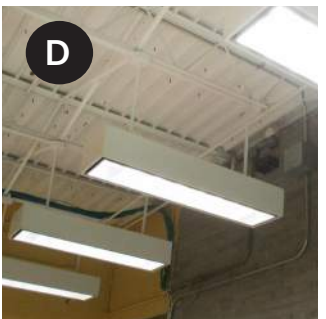
EXISTING SKYLIGHT



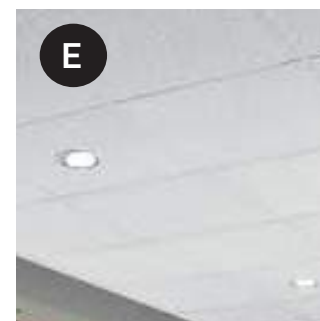
EXISTING GWB



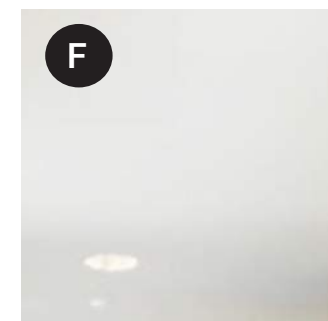
EXISTING EXPOSED



ACT



GWB





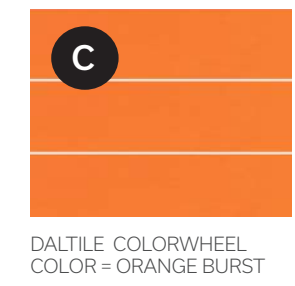
FINISHES - WALLS



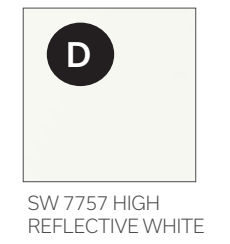
DECORATIVE WOOD



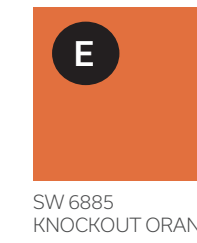
WALL TILE



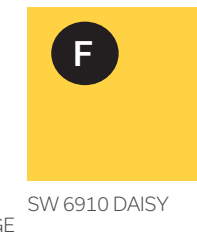
PAINT-1



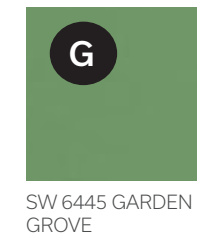
PAINT-1



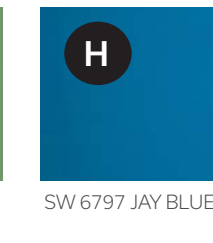
PAINT-2



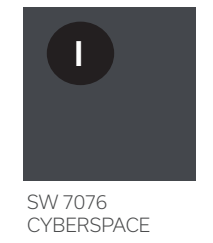
PAINT-3



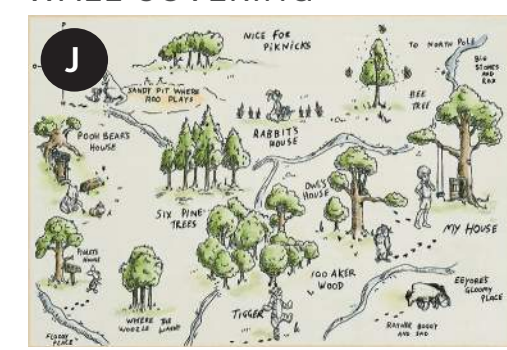
PAINT-4



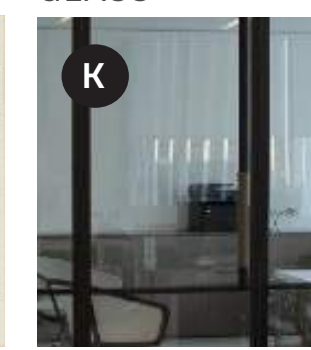
PAINT-5



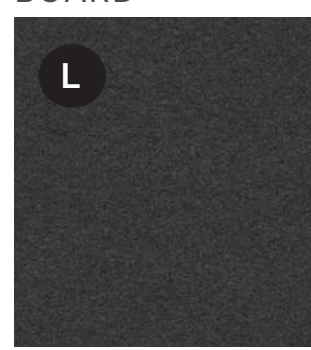
WALL COVERING



GLASS



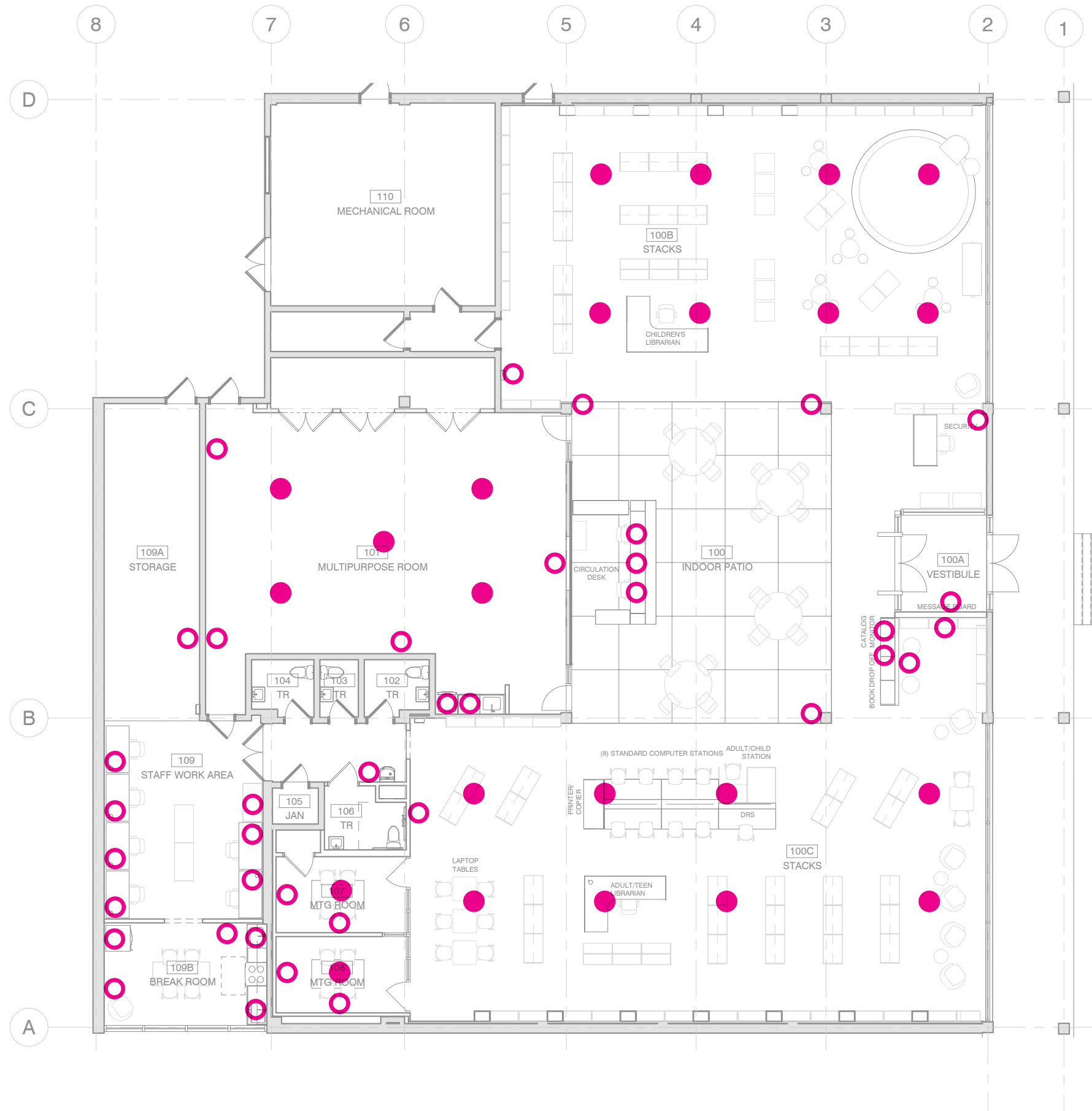
BULLETIN BOARD



HOVIA BOOKWORK WALLPAPER

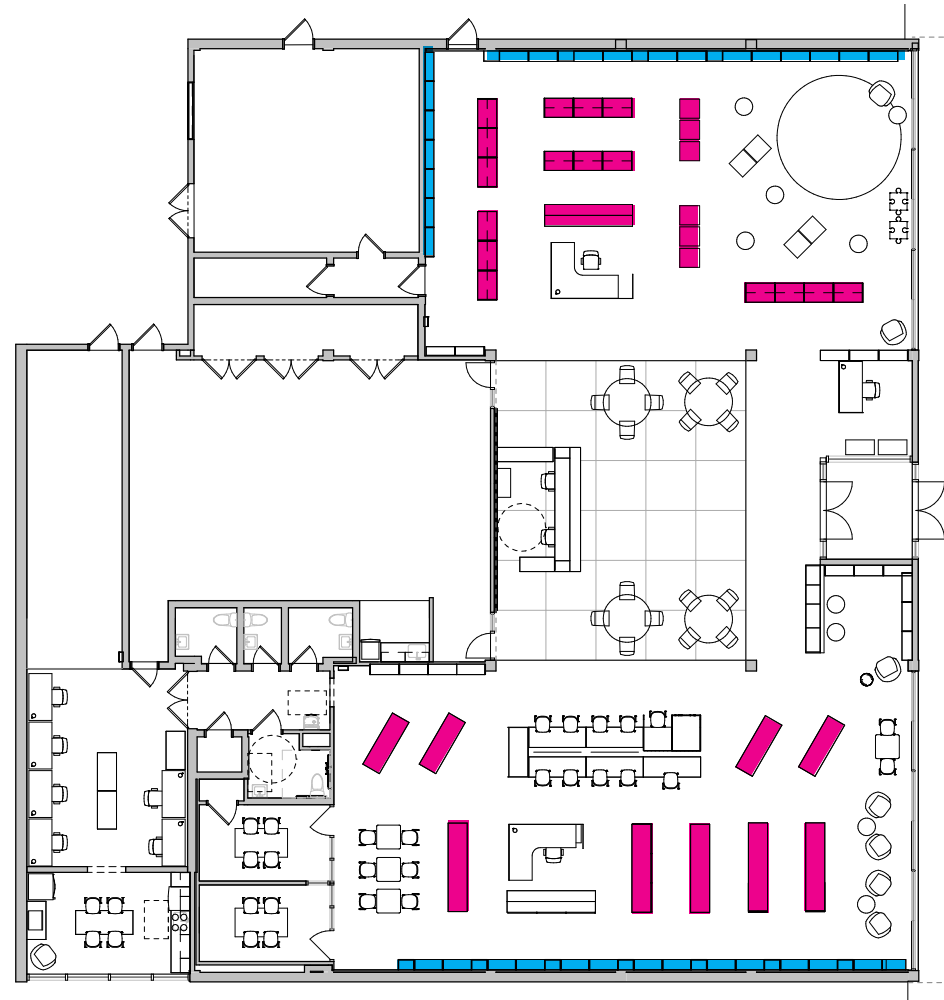


ELECTRICAL PLAN

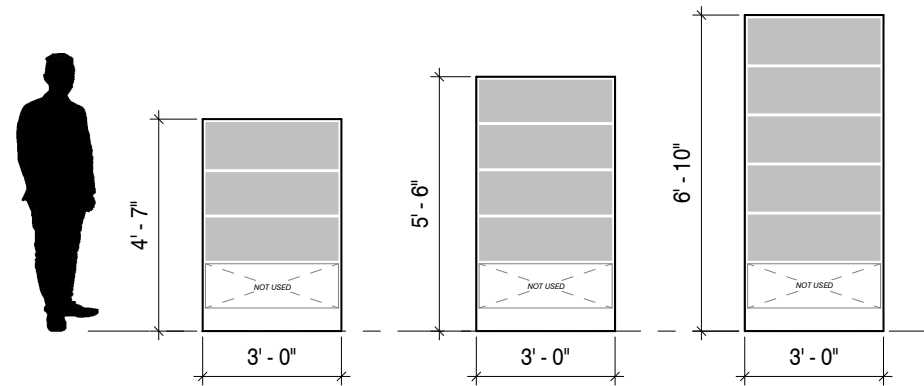


# FURNITURE

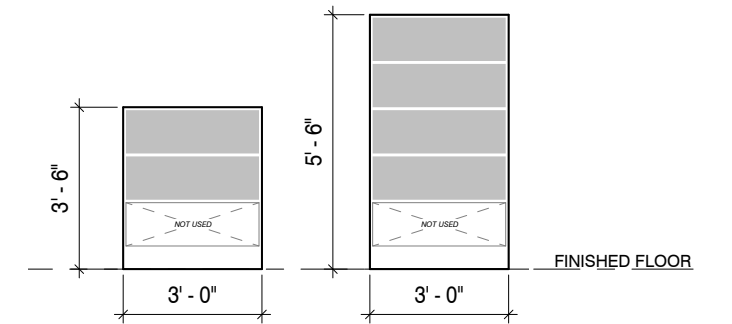
## BOOK SHELVING



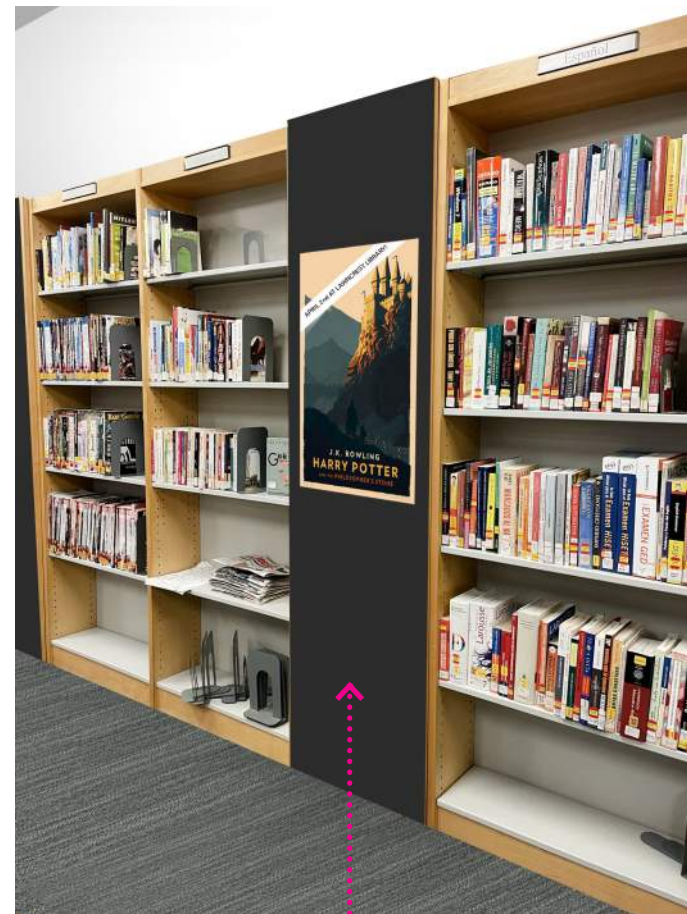
EXISTING SHELVING TO REMAIN AT PERIMETER



NEW FREESTANDING SPACESAVER SHELVING

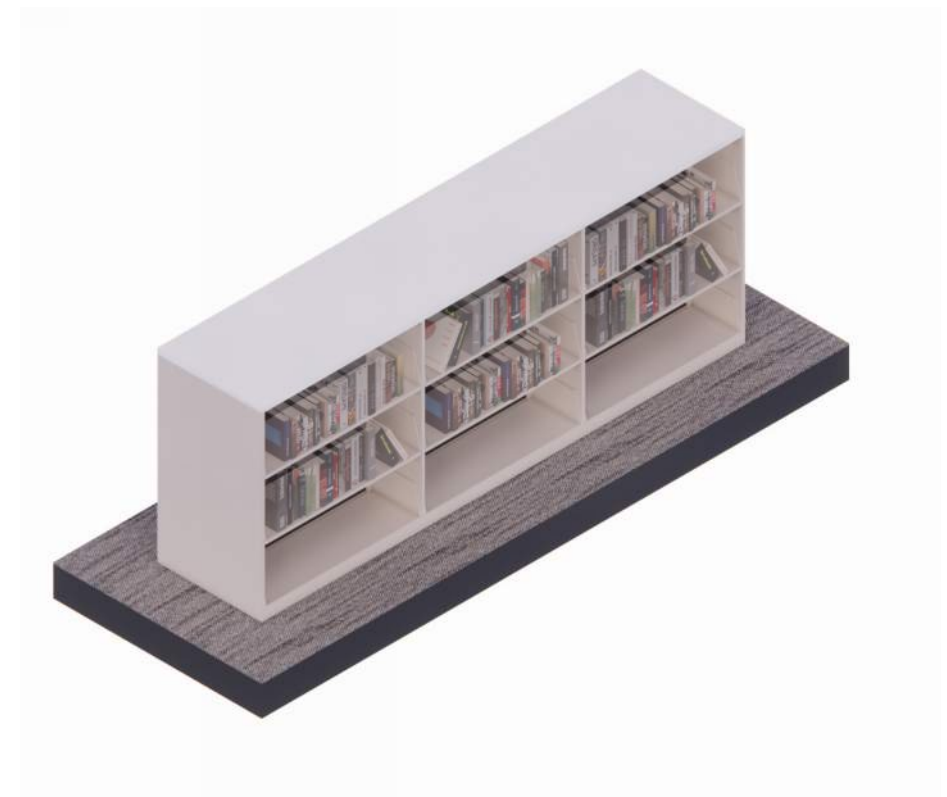


BEFORE



NEW BULLETIN BOARD SURFACE IN BETWEEN SHELVES

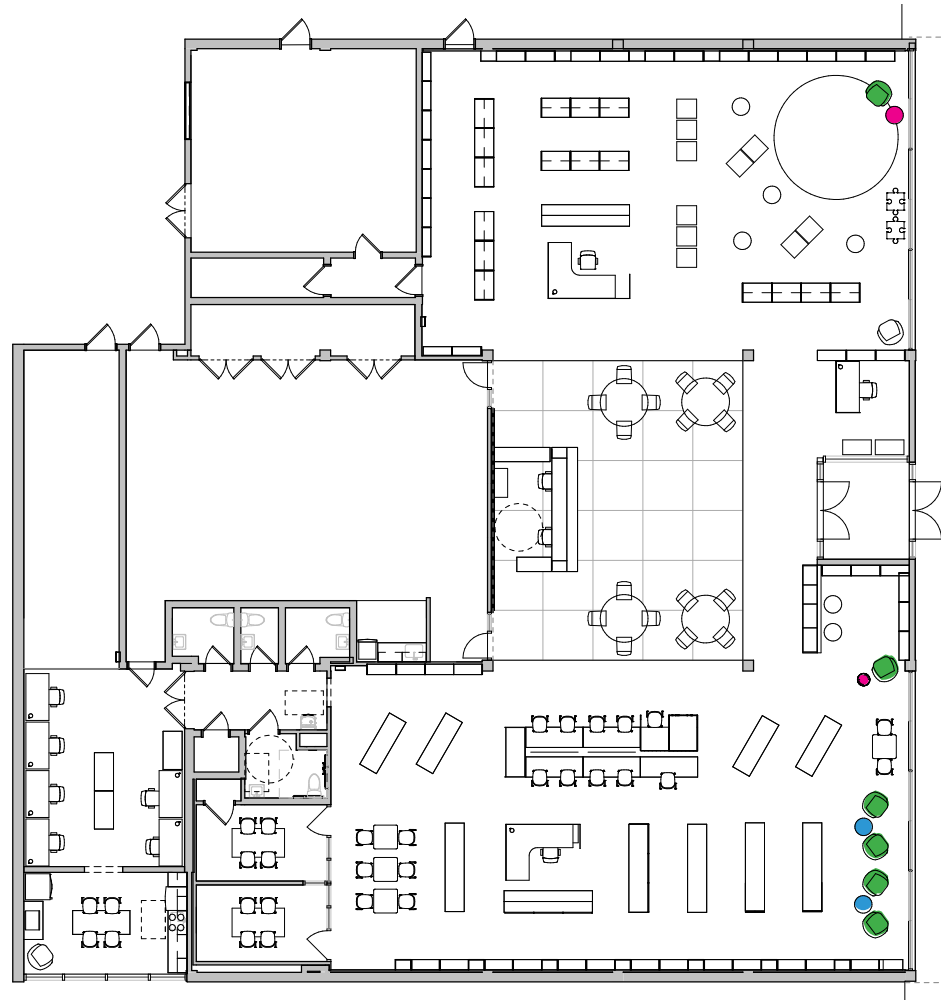
AFTER





FURNITURE

LOUNGE SEATING



HAWORTH POPPY  
LOUNGE CHAIR  
OCEANIC COAST



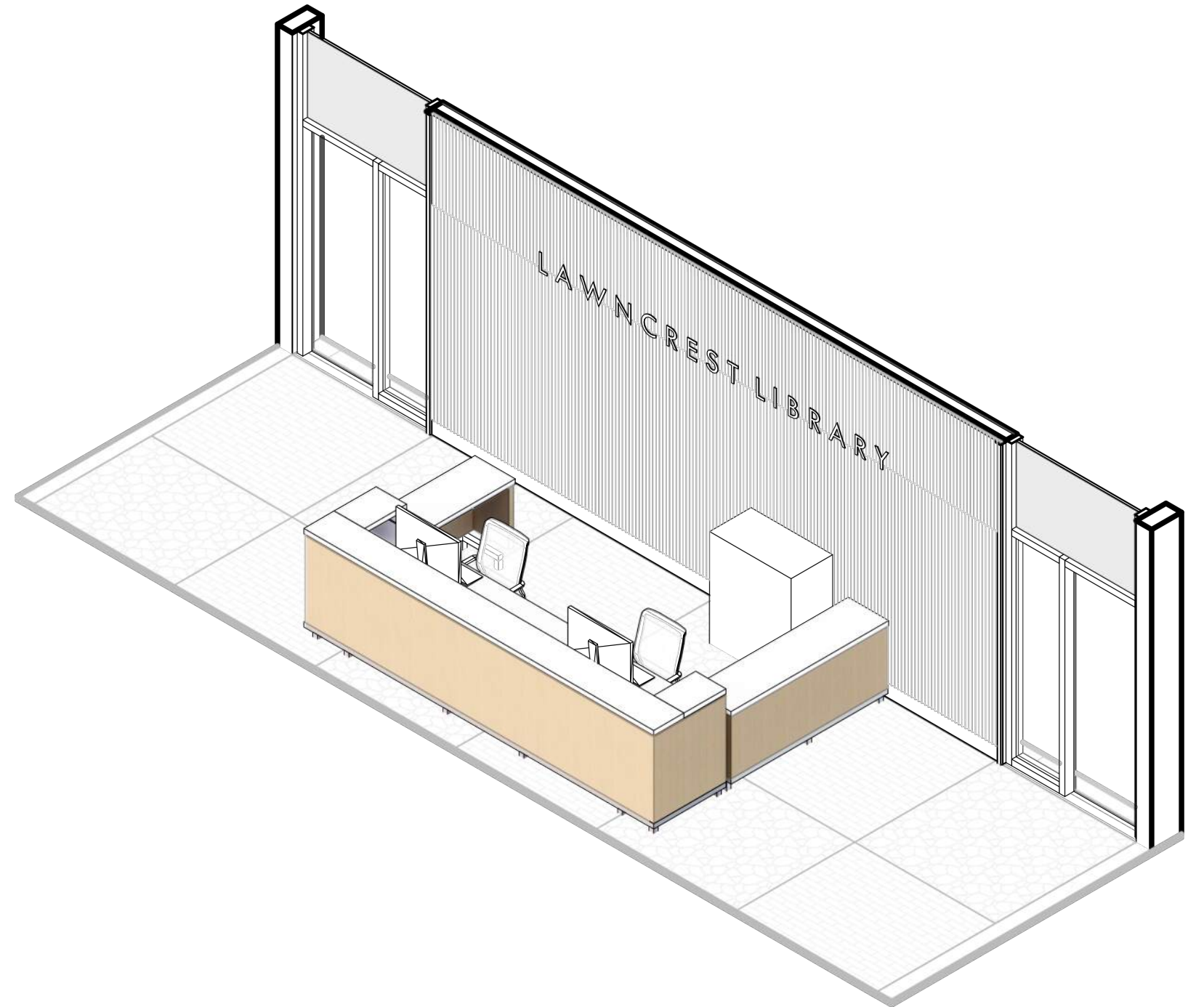
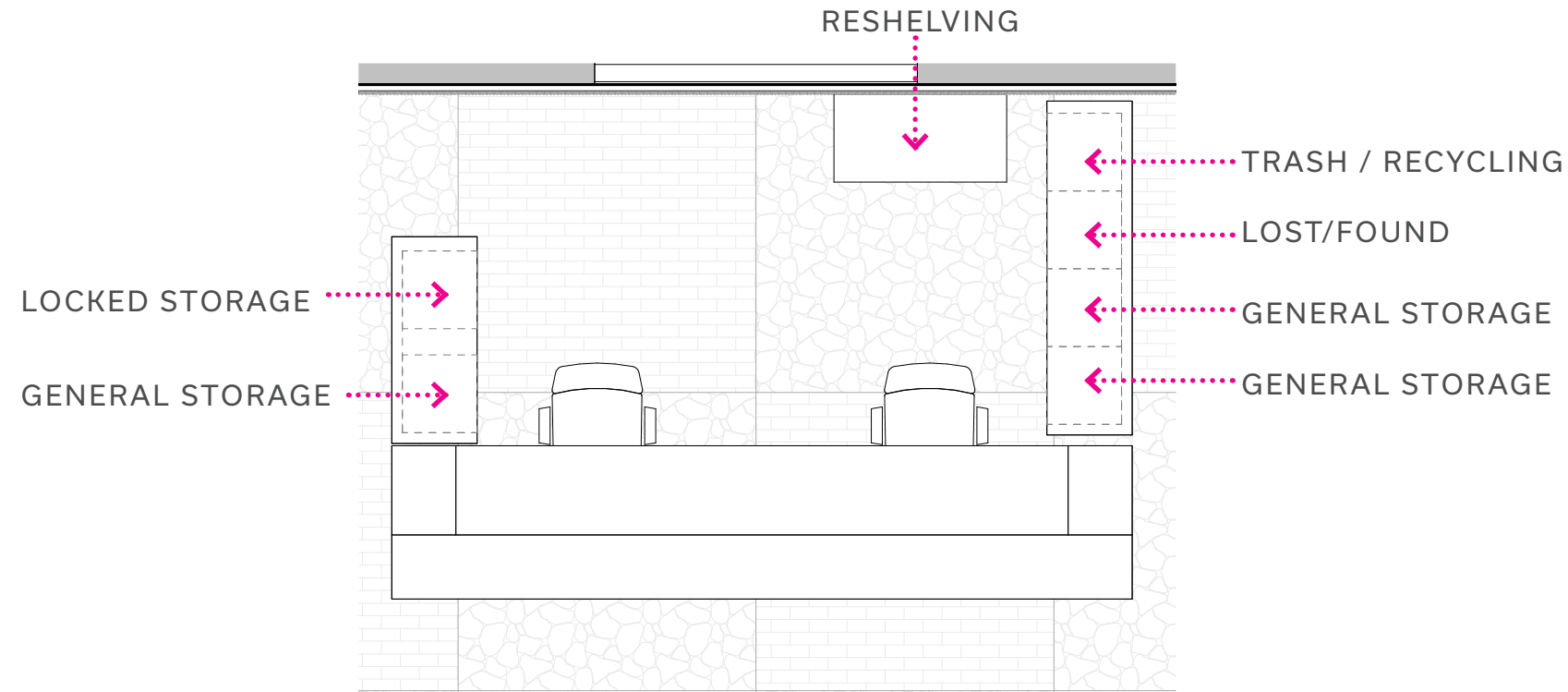
BUZZIMILK SIDE TABLE  
15" x 15" x 15"  
TOP = WHITE OAK



HAWORTH BUZZIBALANCE  
AQUA BFA-143

CIRCULATION DESK

MAIN CIRCULATION DESK



HAWORTH VEDA CHAIR  
COLOR = VEDA MESH BLACK  
BASE COLOR = BLACK



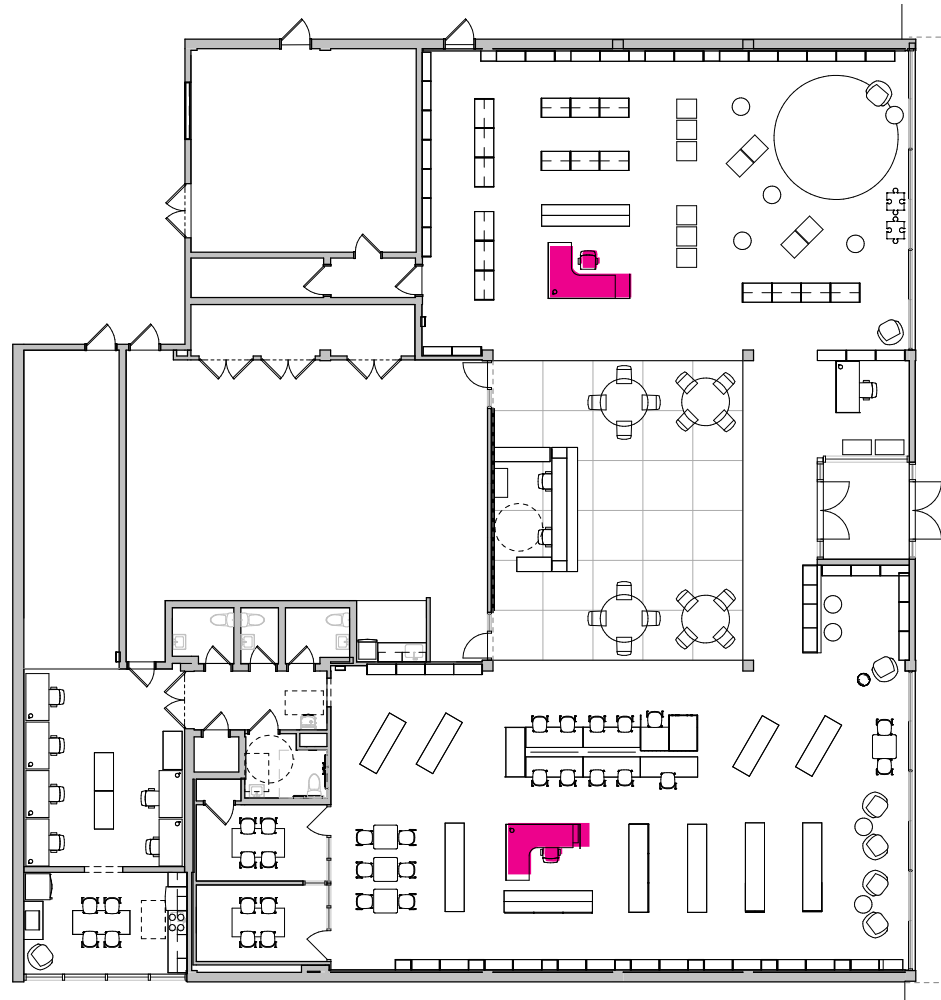
WORKSURFACE  
CAESARSTONE  
COLOR = 6141 OCEAN FOAM



WHITE OAK  
LAMINATE CABINET



FURNITURE



HAWORTH SATIN ETCH  
FRAMELESS TOPPER



HAWORTH VPIXO LIGHT  
COLOR = WHITE



HAWORTH COMPOSE PANELS  
WHITE OAK



HAWORTH X SERIES PEDESTAL  
TABLE COLOR = WHITE OAK  
BASE COLOR = CHARCOAL  
J PULL



HAWORTH VEDA CHAIR  
COLOR = VEDA MESH BLACK  
BASE COLOR = BLACK

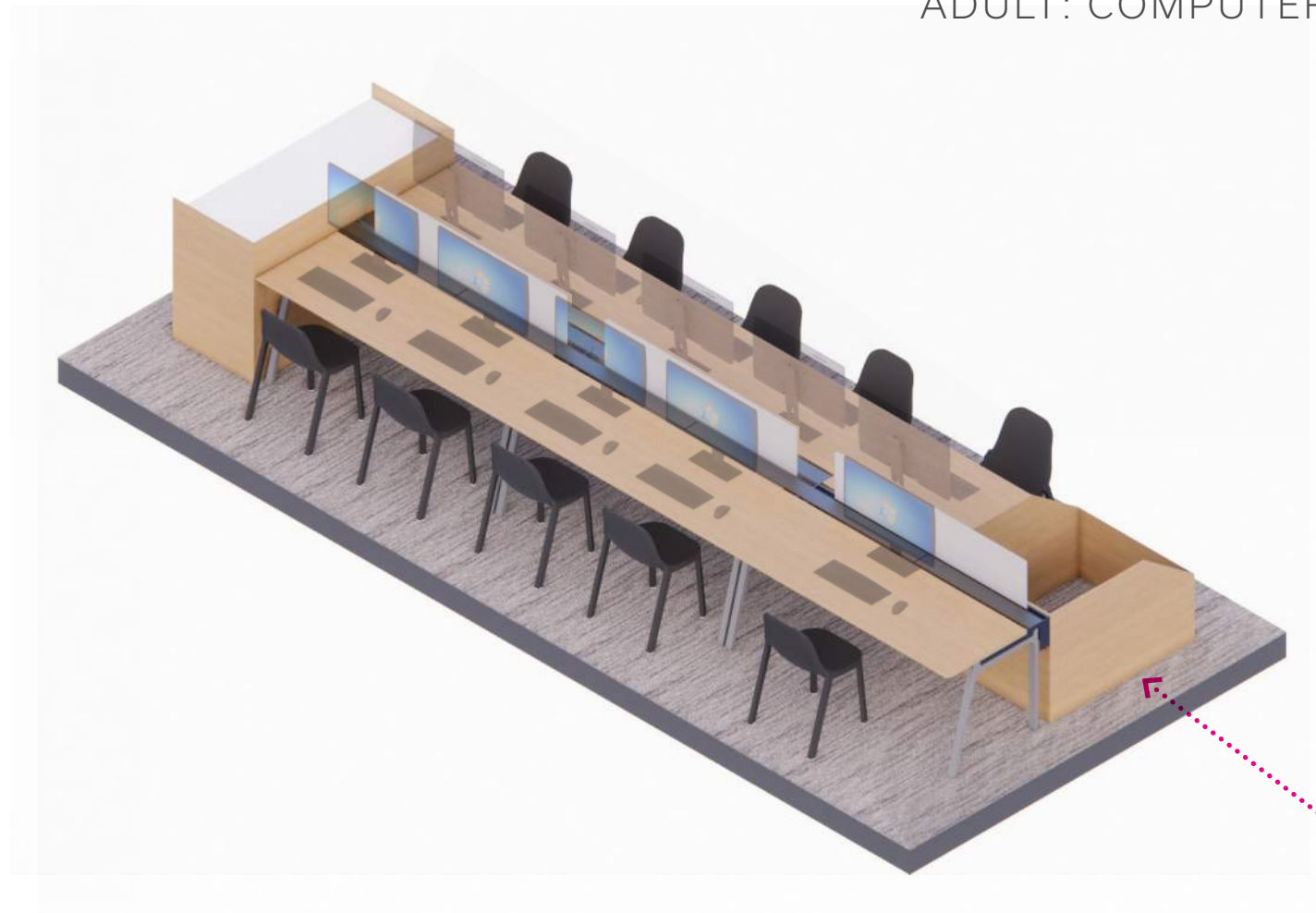
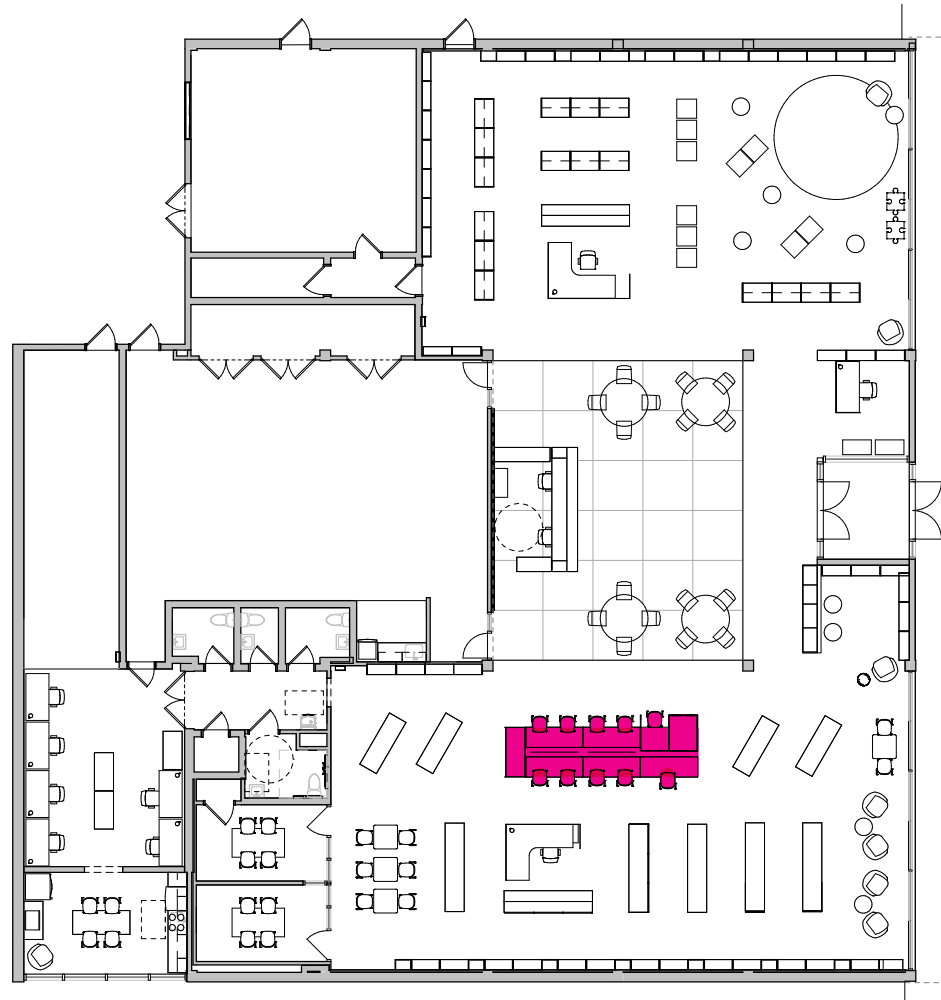


HAWORTH PLANES ADJUSTABLE TABLE  
EXTENDED CORNER  
52 x 84  
TABLE COLOR = WHITE OAK  
BASE COLOR = SILVER



FURNITURE

ADULT: COMPUTER CLUSTERS



EMCO BROOM STACKING CHAIR  
COLOR = DARK GREY



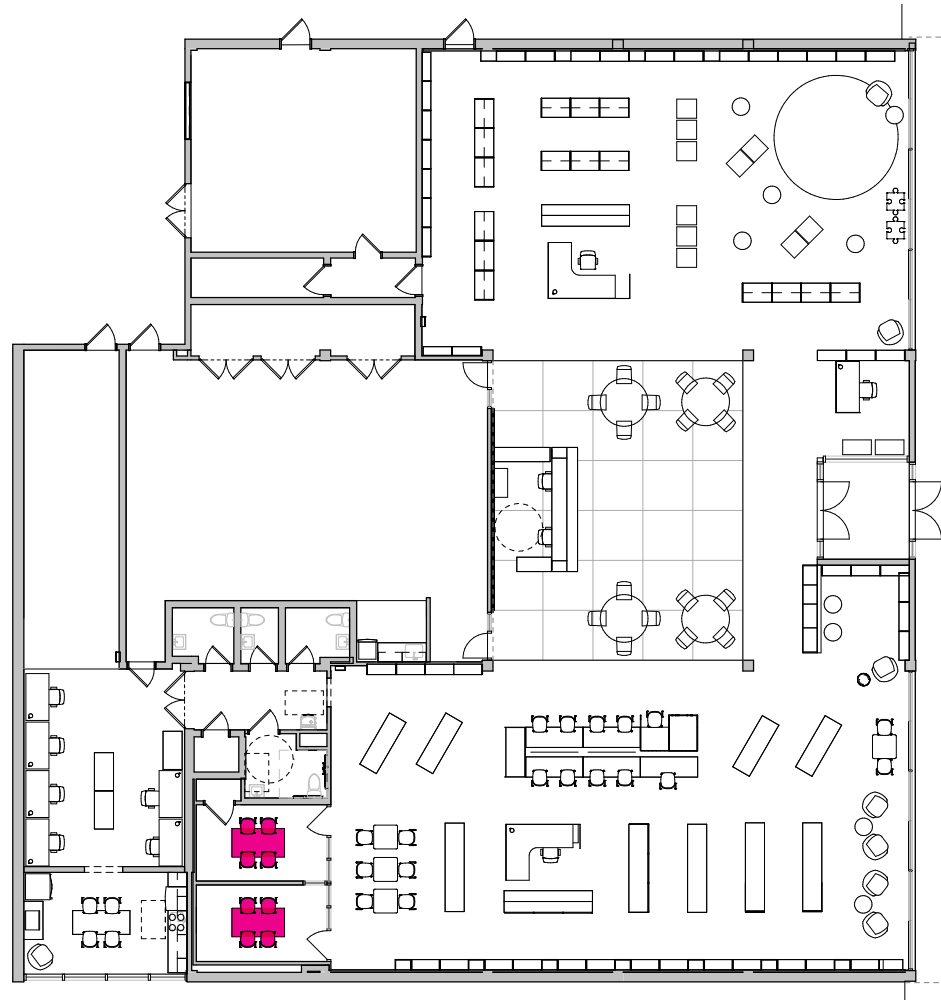
HAWORTH INTUITY BENCH  
TABLE COLOR = LINEN  
BASE COLOR = CHARCOAL



HAWORTH FAMILY WORKSTATION  
WHITE OAK

FURNITURE

ADULT: MEETING ROOMS



EMCO BROOM STACKING CHAIR  
COLOR = YELLOW

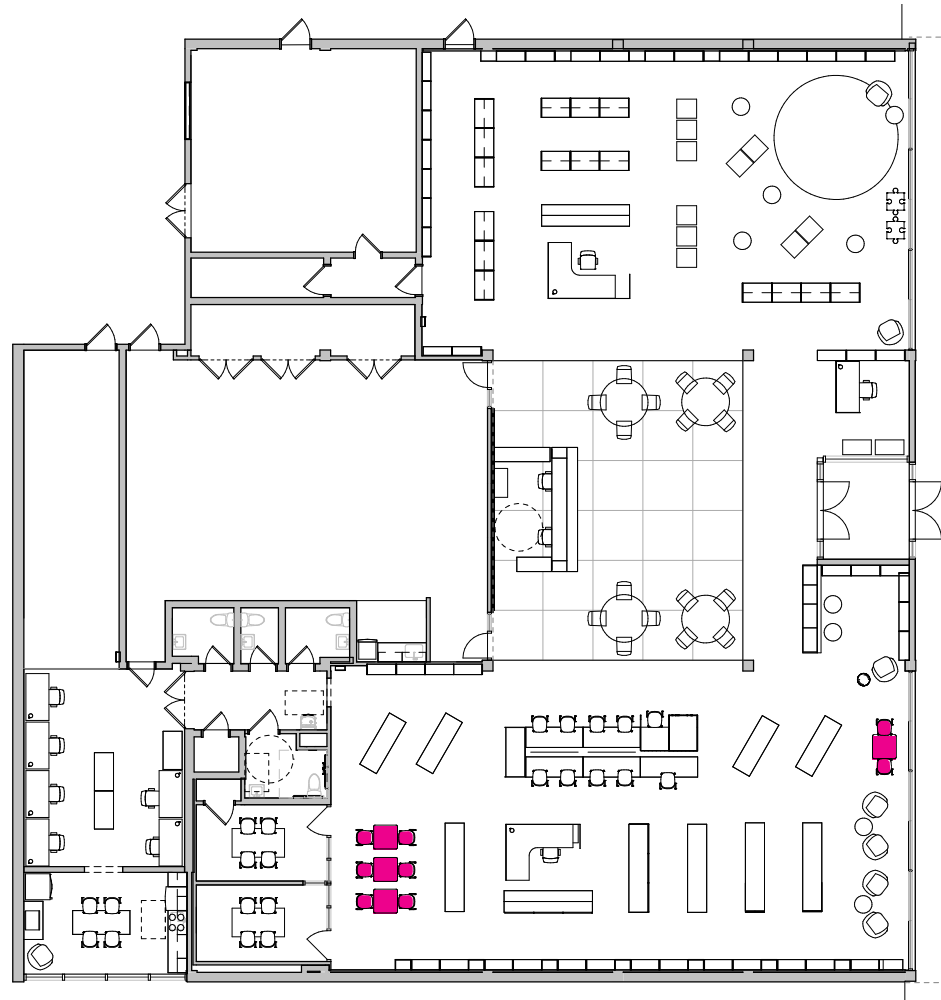


HAWORTH JIVE TABLE, C-LEG, RECTANGULAR  
29 x 30  
TABLE COLOR = LINEN  
BASE COLOR = CHARCOAL



FURNITURE

LOUNGE WORK TABLES



EMCO BROOM STACKING CHAIR  
COLOR = YELLOW

EMCO 2 INCH STAR BASE CAFE TABLE  
30" SQUARE TOP  
TABLE COLOR= WHITE  
BASE COLOR = SILVER

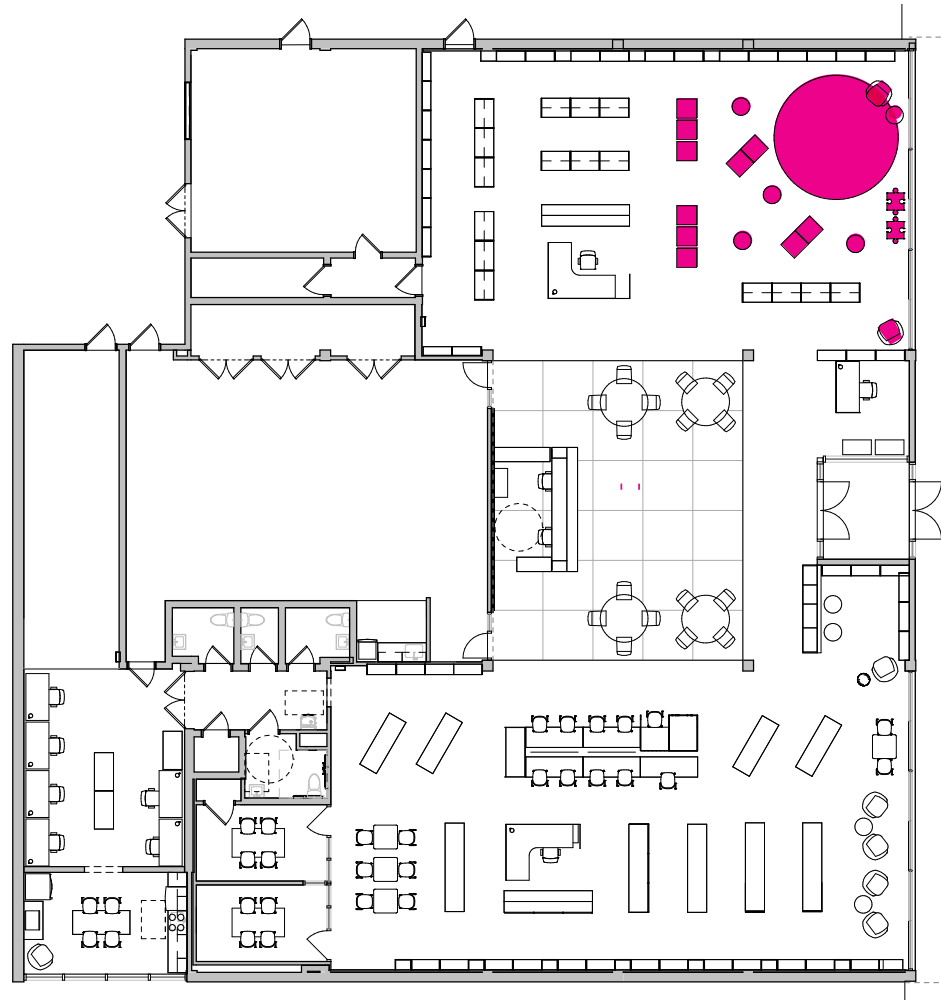


EMCO BROOM STACKING CHAIR  
COLOR = DARK GREY



FURNITURE

CHILDREN'S AREA



SARA TRAG  
BCI EUROBIB

MONTE JOYA ROCKER  
PERFORMANCE VELVET  
DEEP NAVY  
BASE COLOR = MAPLE



HOVIA BOOKWORK WALLPAPER



HAWORTH BUZZI PUZZLE

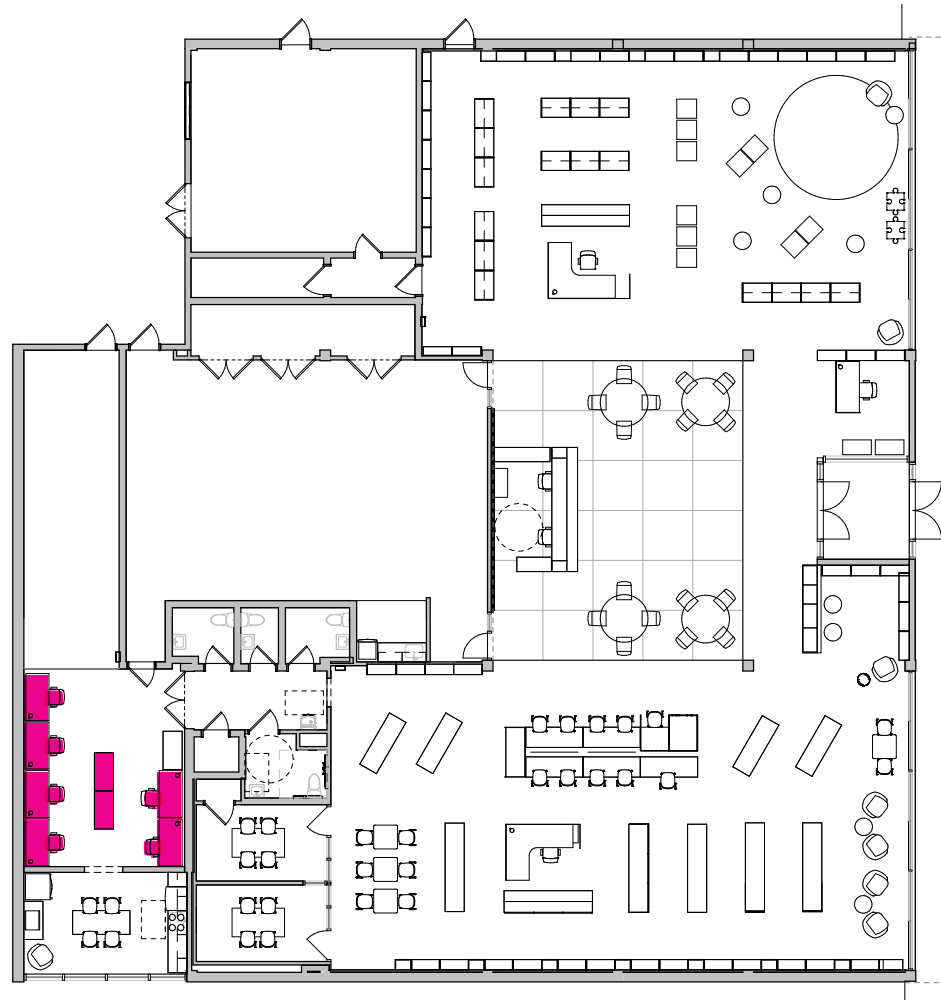


BLUE CIRCULAR RUG



FURNITURE

STAFF: OFFICES



HAWORTH VEDA CHAIR  
COLOR = VEDA MESH BLACK  
BASE COLOR = BLACK



HAWORTH PIXO LIGHT  
COLOR = WHITE



HAWORTH PLANES ADJUSTABLE TABLE  
29 x 30  
TABLE COLOR = WHITE OAK  
BASE COLOR = CHARCOAL



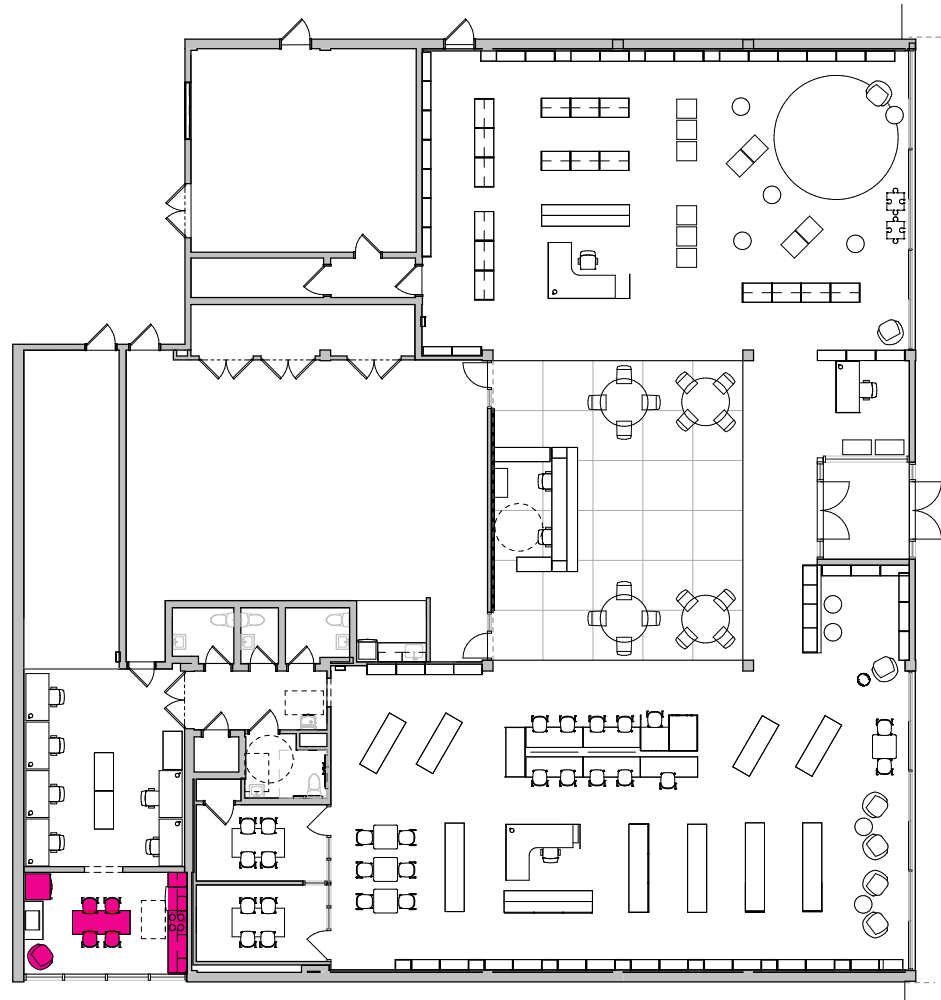
HAWORTH JIVE TABLE, C-LEG, RECTANGULAR  
29 x 30  
TABLE COLOR = WHITE OAK  
BASE COLOR = CHARCOAL



HAWORTH X SERIES PEDESTAL  
TABLE COLOR = WHITE OAK  
BASE COLOR = CHARCOAL  
J PULL

FURNITURE

STAFF: WORK ROOM



EMCO BROOM STACKING CHAIR  
COLOR = ORANGE



HAWORTH JIVE TABLE, C-LEG, RECTANGULAR  
29 x 30  
TABLE COLOR = LINEN  
BASE COLOR = CHARCOAL

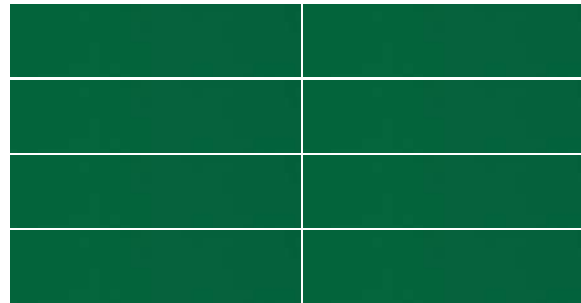


HAWORTH POPPY  
LOUNGE CHAIR  
PEEL



KITCHENETTES

COMMUNITY ROOM KITCHENETTE



COMMUNITY ROOM BACKSPLASH  
DAL TILE COLOR WHEEL  
2 x 8 STACKED BOND  
COLOR = 0151 EMERALD

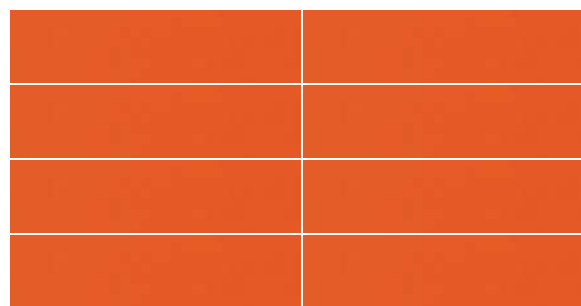


WHITE OAK  
LAMINATE CABINET



\* STOVE IN STAFF  
KITCHENETTE ONLY

STAFF ROOM KITCHENETTE



STAFF KITCHEN BACKSPLASH  
DAL TILE COLOR WHEEL  
2 x 8 STACKED BOND  
COLOR = 0197 ORANGE BURST



COUNTERTOP  
CAESARSTONE  
COLOR = 6141 OCEAN FOAM



WHIRLPOOL 30"  
REFRIGERATOR  
BREAK ROOM



WHIRLPOOL 24"  
REFRIGERATOR  
MULTIPURPOSE ROOM



## RESTROOMS

### WALL PAINT



SW 6797 JAY BLUE

### FLOOR VCT



ARMSTRONG VCT  
51821 CARIBBEAN  
BLUE





GLASS

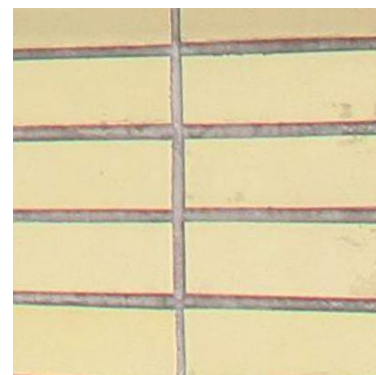
BIRD SAFE GLASS  
GUARDIAN BIRD1ST UV



EAST ELEVATION

**Tested to be bird-friendly**

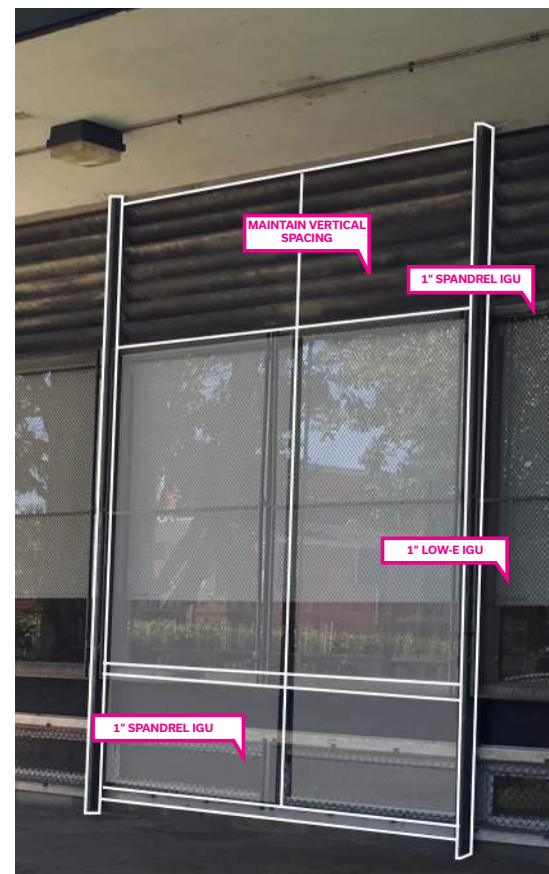
The Guardian Bird1st UV stripe coating visually signals an impending barrier to birds and helps prevent collisions. With an acceptable Threat Factor score from the American Bird Conservancy, the product follows the 2" x 2" rule to account for different sizes and species of birds.



**3** EXISTING BRICK 3  
LIMITED REPAIRS



**5** NEW STOREFRONT



EXISTING STOREFRONT



**Helps with performance**

Paired with SunGuard® Low-E coatings, Guardian Bird1st UV glass delivers on performance while helping with standards. Bird1st products may meet LEED Pilot Credit 55 and contribute to Toronto Green Standard Bird Collision Deterrence values.





LAWNCREST LIBRARY

RESTROOMS



MATERIAL PALETTE

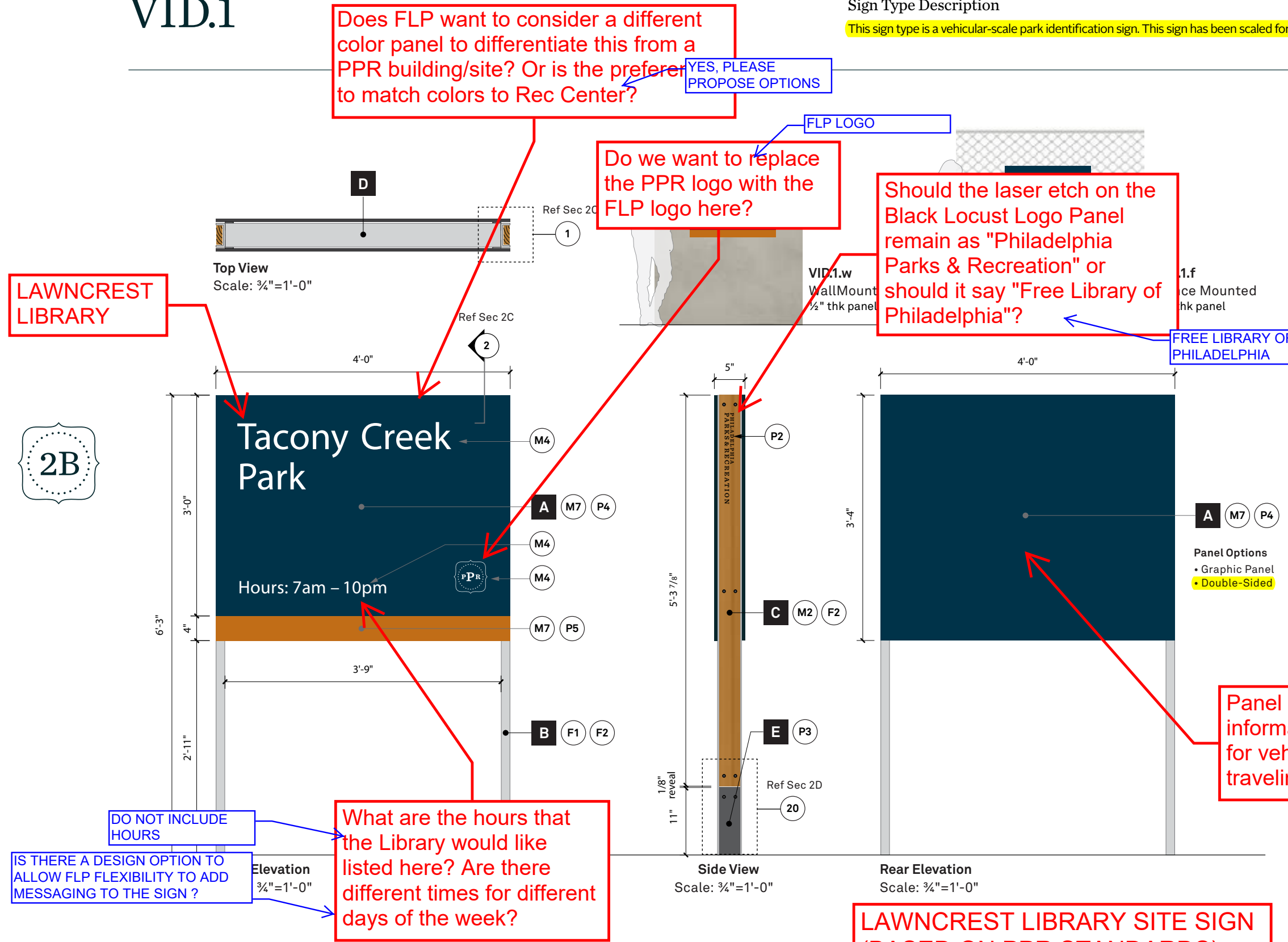




# VID.1

## Sign Type Description

This sign type is a vehicular-scale park identification sign. This sign has been scaled for legibility from the surrounding roadways.



- A Sign Panels**  
Sizes vary. .090" thk painted aluminum panel as noted. Surface applied vinyl messages and graphics. Apply reflective vinyl as noted. Match colors as noted. Attach to Aluminum Channel with VHB Tape.
- B Aluminum Channel**  
4" x 1 1/2" x .125 web 6063-T52 architectural (non-tapered) aluminum channel. Lengths vary. Finished and coated to match as noted.
- C Logo Panels**  
3 3/8" x 1" thk black locust lumber. #1 grade, eased edges. Lengths vary. Laser etch and fill logo graphic. UV clear coated. Recess fasteners, first and second surfaces. See Detail 3 for fastener connections and sizes.
- D Support Tube**  
2 x 4 aluminum tube welded to Aluminum Channels.
- E Footer Attachment**  
3 3/8" x 1" thk aluminum welded to 1/4" thk aluminum plate. Drill and tap as required. Painted to match color as noted. Attach plate to concrete footer. Secure sign (channels) to footer attachments. Footer plate should be below grade and covered as specified in Detail 3.

**Construction Details**  
Refer to Section 2C + 2D for construction drawings and mounting details and Section 2E for placement guidelines.

**LAWNCREST LIBRARY SITE SIGN (BASED ON PPR STANDARDS)**  
SALT DESIGN STUDIO | 3/6/2023